

XL



THE ULTIMATE ROOFTOP JUNCTION BOX

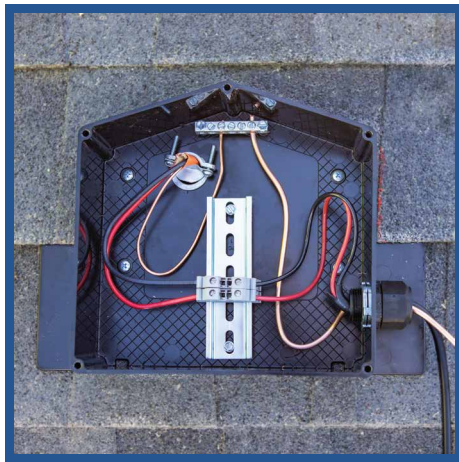
JUST GOT BIGGER... AND BETTER!

INTRODUCING JB-1.XL



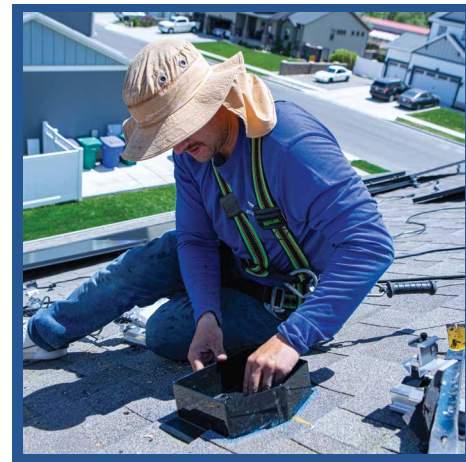
COST EFFECTIVE

- We believe that EVERYONE should have access to affordable renewable energy
- Larger box at a lower cost



MORE SPACE

- Made from advanced durable polycarbonate + superior components, UL1741, Nema 3R, CSA C22.2 No. 290
- 3 patented layers of water protection
- 2 Weep Holes for breathability



FAST INSTALL

- Enter through 3 Side Walls
- Minimal Shingle Cutting
- Din Rail pre-installed



A. System Specifications and Ratings

- Maximum Voltage: 1,000 Volts
- Maximum Current: **JB-1.2:** 80 Amps; **JB-1.XL:** 120 Amps
- Allowable Wire: 14 AWG – 6 AWG
- Spacing: Please maintain a spacing of at least ½” between uninsulated live parts and fittings for conduit, armored cable, and uninsulated live parts of opposite polarity.
- Enclosure Rating: Type 3R
- Roof Slope Range: 2.5 – 12:12
- Max Side Wall Fitting Size: 1”
- Max Floor Pass-Through Fitting Size: 1”
- Ambient Operating Conditions: (-35°C) - (+75°C)
- Compliance:
 - **JB-1.2:** UL1741, CSA C22.2 No. 290; **JB-1.XL:** UL1741, CSA C22.2 No. 290
 - Approved wire connectors: must conform to UL1741, CSA C22.2 No. 290
- System Marking: **Interek Symbol and File #5019942**
- Periodic Re-inspections: If re-inspections yield loose components, loose fasteners, or any corrosion between components, components that are found to be affected are to be replaced immediately.



Table 1: Typical Wire Size, Torque Loads and Ratings

	1 Conductor	2 Conductor	Torque				
			Type	NM	Inch Lbs	Voltage	Current
ABB ZS6 terminal block	10-24 awg	16-24 awg	Sol/Str	0.5-0.7	6.2-8.85	600V	30 amp
ABB ZS10 terminal block	6-24 awg	12-20 awg	Sol/Str	1.0-1.6	8.85-14.16	600V	40 amp
ABB ZS16 terminal block	4-24 awg	10-20 awg	Sol/Str	1.6-2.4	14.6-21.24	600V	60 amp
ABB M6/8 terminal block	8-22 awg		Sol/Str	.08-1	8.85	600V	50 amp
Ideal 452 Red <small>WING-NUT Wire Connector</small>	8-18 awg		Sol/Str	Self-Torque	Self-Torque	600V	
Ideal 451 Yellow <small>WING-NUT Wire Connector</small>	10-18 awg		Sol/Str	Self-Torque	Self-Torque	600V	
Ideal, In-Sure <small>Push-In Connector Part #39</small>	10-14 awg		Sol/Str	Self-Torque	Self-Torque	600V	
WAGO, 2204-1201	10-20 awg	16-24 awg	Sol/Str	Self-Torque	Self-Torque	600V	30 amp
WAGO, 221-612	10-20 awg	10-24 awg	Sol/Str	Self-Torque	Self-Torque	600V	30 amp
Dottie DRC75	6-12 awg		Sol/Str	Snap-In	Snap-In		
ESP NG-53	4-6 awg		Sol/Str		45	2000V	
	10-14 awg		Sol/Str		35		
ESP NG-717	4-6 awg		Sol/Str		45	2000V	
	10-14 awg		Sol/Str		35		
Brumall 4-5,3	4-6 awg		Sol/Str		45	2000V	
	10-14 awg		Sol/Str		35		

Table 2: Minimum wire-bending space for conductors through a wall opposite terminals in mm (inches)

Wire size, AWG or kcmil (mm2)	Wires per terminal (pole)			
	1 mm (inch)	2 mm (inch)	3 mm (inch)	4 or More mm (inch)
14-10 (2.1-5.3)	Not Specified	-	-	-
8 (8.4)	38.1 (1-1/2)	-	-	-
6 (13.3)	50.8 (2)	-	-	-