

# Kinetic Solar Rhino Mount



KHRT-M

Serrated Nut



KHRT25-M

Serrated Nut and

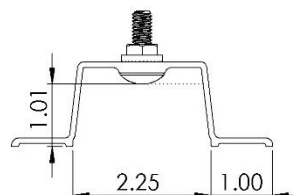
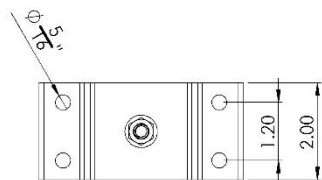
4 x 1/4" x 1 1/2" Self Drilling Screws



KHRT31-M

Serrated Nut and

4 x 5/16" x 1 1/2" Lag Bolts



Attaches to	Strapping
Hardware	Stainless Steel
Aluminum Finish	Mill
Gasket	Butyl

The Rhino Mount is designed so that the rails can run parallel to the eave of the roof or parallel to the seam of the roof (perpendicular to the eave), meaning that landscape installations can be faster and less expensive. It comes with two butyl gaskets, held in place with a retaining lip for superior sealing.



BayWa r.e. Solar Systems Inc.

4703-101 Street NW, T6E 5C6  
Edmonton, AB

Tel: +1 844 851 2390

[solardistribution@baywa-re.ca](mailto:solardistribution@baywa-re.ca)

\*All dimensions in inches unless stated otherwise

20200521